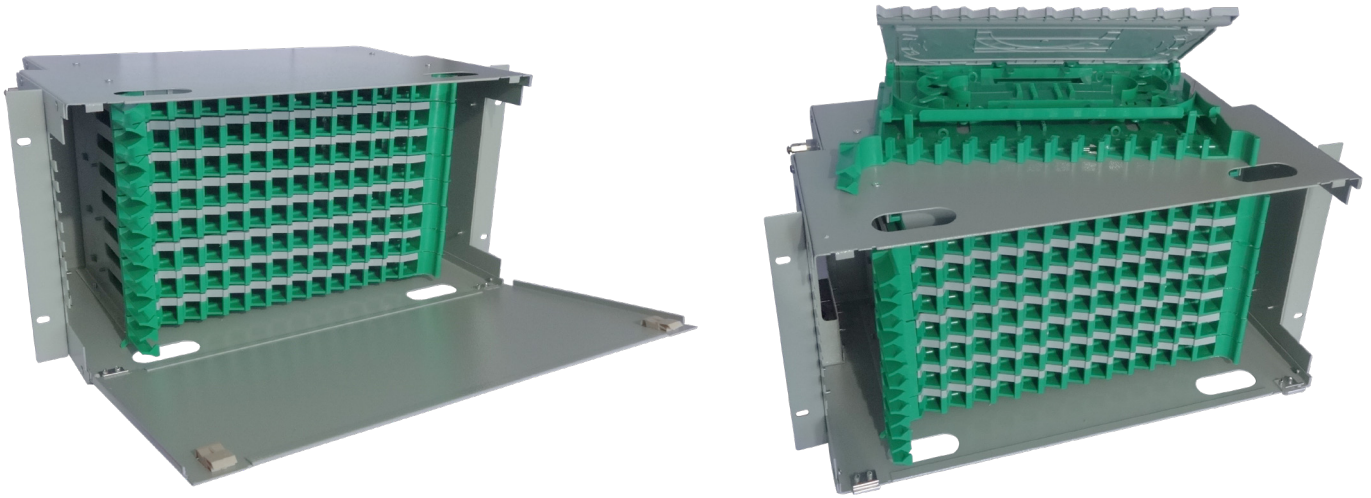


**ODF 96 PORT**



**FEATURES**

- Reasonable design, strong protective performance, anti-impact, anti-aging;
- It has perfect fixing device for fiber optic cable and tail fiber.
- The curvature radius of the optical fibers is greater than 30 mm, the route is reasonable and there is no interference with each other.
- Optical fiber connection is convenient, suitable for hot melt and mechanical connection
- According to the need, the main optical cable can be installed directly, divergently and spectroscopically.
- 19 inch standard installation, good versatility.
- Size(mm): 485x260x5U
- Interface Type: SC FC LC
- MAX Capacity: 96 Core
- Mounting Way: Rack
- Material: Cold-rolled steel sheet

**ORDER INFORMATION**

| P/N      | Description |
|----------|-------------|
| CFB-3096 | ODF 96 PORT |